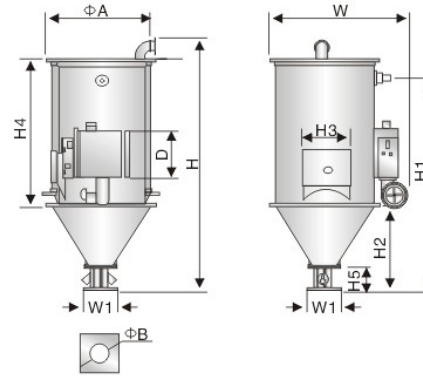




Hopper Dryer



| Model EHD- | 12B | 25B | 50B | 75B | 100B | 150B | 200B | 300B | 400B | 600B | 800B | 1000B |
|------------------------------|-------|-------|-------|-------|------|------|------|------|------|------|------|-------|
| Material barrel capacity (L) | 20 | 40 | 80 | 120 | 160 | 230 | 300 | 450 | 600 | 900 | 1200 | 1500 |
| Drying fan power | 0.100 | 0.135 | 0.170 | 0.185 | 0.2 | 0.2 | 0.35 | 0.35 | 0.45 | 1.03 | 2.2 | 2.2 |
| Drying heater power (kW) | 2.2 | 3.0 | 4.0 | 4.5 | 6 | 8 | 12 | 15 | 18 | 21 | 24 | 30 |
| H (mm) | 865 | 1015 | 1150 | 1240 | 1340 | 1580 | 1759 | 1980 | 2100 | 2530 | 2700 | 3000 |
| H1 (mm) | 750 | 925 | 1050 | 1150 | 1340 | 1600 | 1480 | 1480 | 1850 | 2010 | 2240 | 2470 |
| H2 (mm) | 375 | 410 | 380 | 470 | 470 | 470 | 550 | 550 | 770 | 770 | 950 | 950 |
| H3 (mm) | 370 | 460 | 530 | 620 | 700 | 1000 | 1100 | 1220 | 1220 | 1550 | 1550 | 1850 |
| H4 (mm) | 110 | 210 | 220 | 220 | 220 | 220 | 258 | 258 | 300 | 300 | 540 | 540 |
| H5 (mm) | 170 | 170 | 170 | 170 | 170 | 170 | 160 | 160 | 220 | 220 | 220 | 220 |
| W (mm) | 660 | 725 | 840 | 840 | 840 | 840 | 1230 | 1230 | 1365 | 1365 | 1420 | 1420 |
| D (mm) | 345 | 405 | 470 | 530 | 600 | 600 | 770 | 770 | 915 | 915 | 600 | 600 |
| A (mm) | 325 | 385 | 510 | 510 | 580 | 580 | 750 | 750 | 910 | 910 | 960 | 960 |
| B (mm) | 55 | 55 | 55 | 55 | 90 | 90 | 90 | 105 | 105 | 105 | 105 | 105 |
| W1 (mm) | 108 | 150 | 150 | 150 | 220 | 220 | 255 | 255 | 345 | 345 | 345 | 345 |
| Weight(kg) | 30 | 35 | 40 | 50 | 70 | 75 | 120 | 120 | 160 | 240 | 280 | 300 |

Note: We reserve the right of change the specifications without prior notice

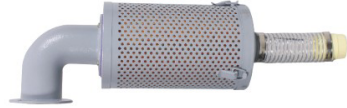
- 1) Change to controlled by single-phase power source (1PH230V50Hz), model plus I
- 2) Change to double heat insulation type material barrel, model plus I
- 3) Retrofitting 24hr timer, model plus T
- 4) Voltage specification 3Φ. 400V, 50Hz



Hopper Dryer Accessories



Magnet Base



Exhaust Air Filter



Hopper Magnet



Double Tube Suction Box



Hot Air Recycling Device